



**Palazzoli**  
GROUP



**BRAVO** 

WATERPROOF, HIGH-BAY AND FLOODLIGHT  
FIXTURES FOR FUNCTIONAL ILLUMINATION



The UK company Lewden, with more than 70 years of experience in the electromechanical industry, is a respected supplier of electrical and lighting equipment worldwide.

Over time it has won prestigious projects in the marine sector (Queen Elizabeth aircraft carrier), power generation (solar and wind farms), mass transport (London Underground), lighting (London Olympic Park) and defence (Royal Air Force and military camps).

Lewden offers a "SMART" product range: high-performance, functional and tailored to the specific market needs. With Lewden, Palazzoli Group responds to a market demand increasingly oriented to efficient solutions.

# BRAVO

SMART SOLUTIONS FOR LED LIGHTING



HIGH-BAY

WATERPROOF



FLOODLIGHT



Made by Lewden ensuring all safety and efficiency requirements.

From the classic suspension high-bay to wall-mounted floodlights and waterproof linear light fixtures.

# BRAVO<sup>®</sup>-WL

WATERPROOF



For industrial, commercial and storage areas, car parks, underpasses, garages and workshops.

## Technical features

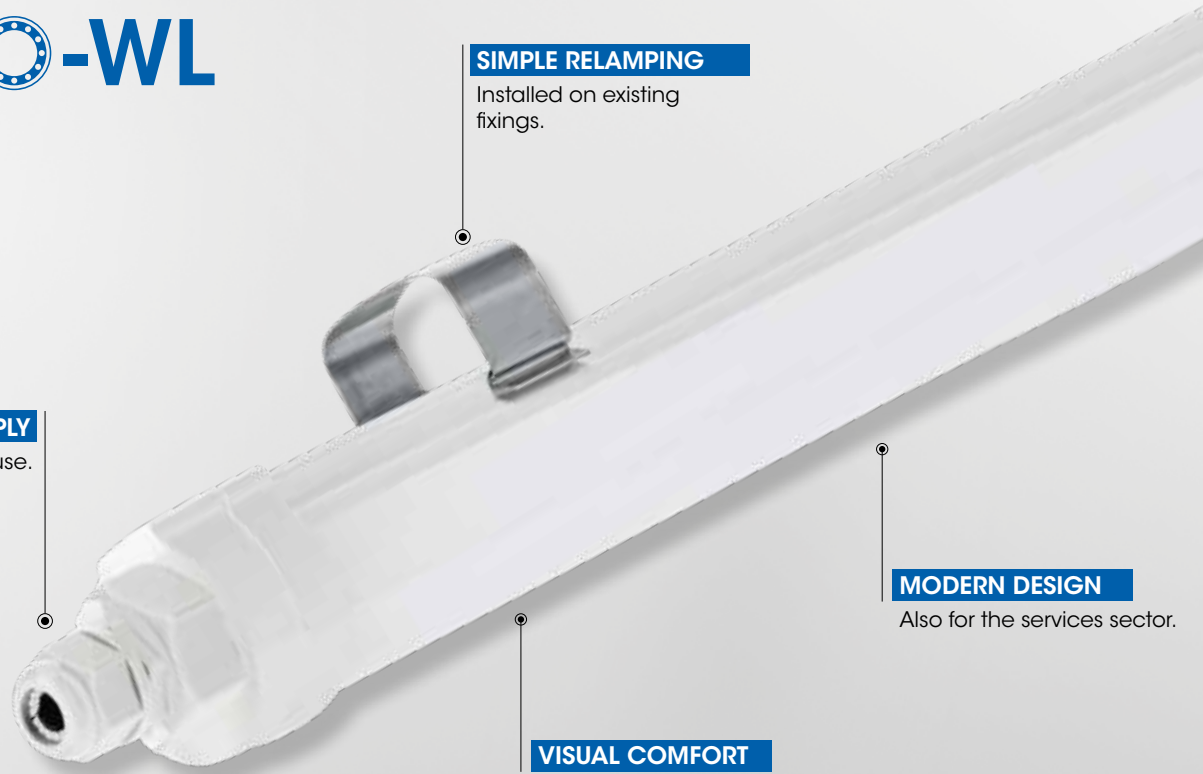
Body material	Polycarbonate	Photobiological risk	RG1 according to IEC/TR 62778
Colour	White	Glare index	UGR<25
Diffuser	Polycarbonate	Residual flicker	<3%
Protection rating	IP65	Lifetime	L80 50000h Tq=25 °C
Impact resistance	IK07	Insulation class	II
Mounting system	Quick connection for pendant mounting	Supply voltage	220-240V AC 50/60 Hz
Optics features	Symmetrical extra wide beam	Control system	Standard on-off
Actual luminaire efficiency	145 lm/W	Surge protection	2 kV
Colour temperature	3000 K - 4000 K - 6500 K adjustable via an internal DIP switch	Power factor	>0,9
Colour rendering index values (CRI)	80	Ambient temperature	-20 °C ÷ +45 °C
Colour tolerance	SDCM<5	Power supply	Terminal blocks 2x1,5 mm <sup>2</sup>
		Warranty	2 years extendable to 5 years

## Product standards

EN 60598-1, EN 60598-2-1, EN60598-2-5, EN 62471, EN 60598-2-22, EN 60598-2-24, EN 62493, IEC/TR 62778, EN 55015, EN 61547, EN 61000-3-2, EN 61000-3-3, EN 50581, DIN 18032-3, EN 13964

# BRAVO<sup>®</sup>-WL

**WATERPROOF**



**SIMPLE RELAMPING**

Installed on existing fixings.

**QUICK POWER SUPPLY**

Ready to use.

**MODERN DESIGN**

Also for the services sector.

**VISUAL COMFORT**

Customizable color temperature.

## BRAVO-WL

Polycarbonate / wide beam optics



Power (W)	Flux effective (lm)	Length (mm)	Installation height (m)	Replaces	Product code
20	2800	600	3	2x18W T8	<b>852060</b>
35	5040	1200	4	2x36W T8	<b>852120</b>
50	7000	1500	6	2x58W T8	<b>852150</b>



**CRI 80**  
Colour rendering index values

**IP65**

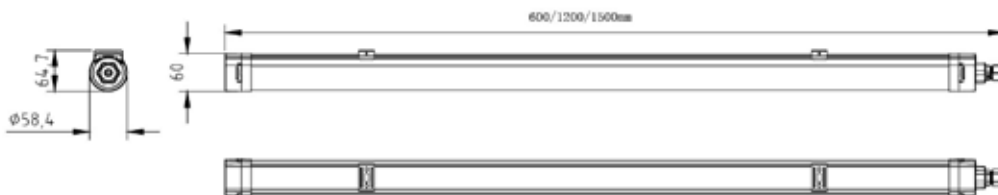
Protection Rating



**UK CA** UK Conformity Assessed



**Warranty**  
2-year warranty extendable to 5 years



**EQUIPMENT INCLUDED**

Brackets for mounting.

**FEATURES**

220 V to 240 V multi-voltage power supply unit.  
Driver equipped with protection system up to 2 kV in common mode and in differential mode.  
Linear LED lighting with 3 selectable color temperature levels (3000 K, 4000 K, 6500 K), adjustable via an internal DIP switch.

# BRAVO<sup>®</sup>-HB

## HIGH-BAY



For warehouses, logistics halls,  
industries and high ceilings.

### Technical features

<b>Body material</b>	Aluminium Alloy EN46100	<b>Photobiological risk</b>	RG0 according to IEC/TR 62778
<b>Surface treatment</b>	Polyester powder paint	<b>Glare index</b>	UGR<25
<b>Colour</b>	Silver	<b>Residual flicker</b>	<3%
<b>Diffuser</b>	Polycarbonate	<b>Lifetime</b>	L80 50000h Tq=25 °C
<b>Protection rating</b>	IP65	<b>Insulation class</b>	I
<b>Impact resistance</b>	IK08	<b>Supply voltage</b>	110-240V AC 50/60 Hz
<b>Mounting system</b>	Quick connection for pendant mounting	<b>Control system</b>	Standard on-off
<b>Optics features</b>	Symmetrical extra wide beam	<b>Surge protection</b>	4 kV
<b>Actual luminaire efficiency</b>	135 lm/W	<b>Power factor</b>	>0,95
<b>Colour temperature</b>	4000 K	<b>Ambient temperature</b>	-20 °C ÷ +45 °C
<b>Colour rendering index values (CRI)</b>	80	<b>Power supply</b>	H05RNF 3x1 mm <sup>2</sup> cable 30 cm length
<b>Colour tolerance</b>	SDCM<5	<b>Warranty</b>	2 years extendable to 5 years

### Product standards

EN 60598-1, EN 60598-2-1, EN60598-2-5, EN 62471, EN 60598-2-22, EN 60598-2-24, EN 62493, IEC/TR 62778, EN 55015, EN 61547, EN 61000-3-2, EN 61000-3-3, EN 50581, DIN 18032-3, EN 13964

# BRAVO<sup>®</sup>-HB

## HIGH-BAY

### LIGHTWEIGHT AND COMPACT

Minimal space requirement.

### EFFECTIVE RELAMPING

Sizes equivalent to discharge lamps.

### DRIVER INTEGRATED

Universal solution with 110V to 240V voltage.

### SAFE LIGHT

Ensures <3% flicker.

Short  
payback  
time



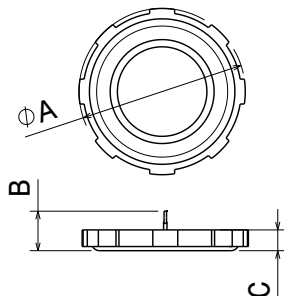
## BRAVO-HB

Aluminium / Polycarbonate wide beam optics



Wide beam 90°

Power (W)	Flux effective (lm)	Installation height (m)	Replaces	Product code
100	13500	7	250W JM/SAP	<b>BVHA9840SC</b>
150	20250	9	400W JM	<b>BVHB9840SC</b>
190	25650	10	400W JM/SAP	<b>BVHC9840SC</b>



Power	A (mm)	B (mm)	C (mm)
100W	250	70	51
150W	292	70	51
190W	335	70	51



**CRI 80**  
Colour rendering index values

IP65

Protection Rating



**UK CA** UK Conformity Assessed



**Warranty**  
2-year warranty extendable to 5 years

### EQUIPMENT INCLUDED

Hook for pendant mounting.

### FEATURES

110 V to 240 V multi-voltage power supply unit.  
Driver equipped with protection system up to 4 kV in common mode and in differential mode.  
UV insulating multi-lens.  
Diffuser fall arrester devices.

# BRAVO-FL

## FLOODLIGHT



For public and industrial areas and sports centres.

### Technical features

Body material	Aluminium Alloy EN46100
Surface treatment	Polyester powder paint
Colour	Black
Diffuser	Extra clear tempered glass
Protection rating	IP65
Impact resistance	IK08
Mounting system	Adjustable bracket
Optics features	Symmetrical extra wide beam
Actual luminaire efficiency	123 lm/W
Colour temperature	4000 K
Colour rendering index values (CRI)	80
Colour tolerance	SDCM<5
Photobiological risk	RG1 according to IEC/TR 62778

Glare index	UGR<25
Residual flicker	<3%
Lifetime	L80 50000h Tq=25 °C
Insulation class	I
Supply voltage	220-240V AC 50/60Hz (20 e 50W) 120-277V AC 50/60Hz (100W, 150W e 200W)
Control system	Standard on-off
Surge protection	1 kV common mode 2 kV differential mode (20W e 50W) 4 kV common mode 6 kV differential mode (100W, 150W e 200W)
Power factor	>0,95
Ambient temperature	-20 °C - +50 °C
Power supply	H05RNF 3x1 mm <sup>2</sup> cable 30 cm length
Warranty	2 years extendable to 5 years

### Product standards

EN 60598-1, EN 60598-2-1, EN60598-2-5, EN 62471, EN 60598-2-22, EN 60598-2-24, EN 62493, IEC/TR 62778, EN 55015, EN 61547, EN 61000-3-2, EN 61000-3-3, EN 50581, DIN 18032-3, EN 13964

# BRAVO-FL

## FLOODLIGHT

### FUNCTIONAL DESIGN

The surfaces prevent the accumulation of dust.

### ENERGISED

Hermetically sealed gaskets.

### OUTDOOR AND INDOOR

Up to + 50 °C.

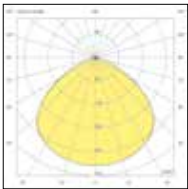
### OPTICS

Symmetrical and asymmetrical for effective light distribution.



## BRAVO-FL

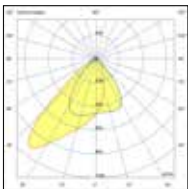
Aluminium / symmetrical glass optics



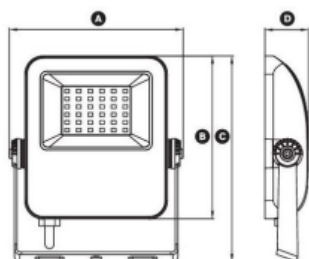
Power (W)	Flux effective (lm)	Installation height (m)	Replaces	Product code
20	2400	2	70W JM/SAP	<b>851100</b>
50	6000	5	100W JM/SAP	<b>851200</b>
100	12000	7	250W JM/SAP	<b>851300</b>
150	18000	8	400W JM	<b>851400</b>
200	24000	10	400W JM/SAP	<b>851500</b>

## BRAVO-FL

Aluminium / asymmetrical glass optics



Power (W)	Flux effective (lm)	Installation height (m)	Replaces	Product code
50	6000	5	100W JM/SAP	<b>851210</b>
100	12000	7	250W JM/SAP	<b>851310</b>
150	18000	8	400W JM	<b>851410</b>
200	24000	10	400W JM/SAP	<b>851510</b>



Code	A (mm)	B (mm)	C (mm)	D (mm)
851100	117	110	143	33
851200	174	160	200	43
851210	223	220	262	49
851300 - 851310	272	265	315	60
851400 - 851410	297	300	350	60
851500 - 851510	347	360	408	60



**CRi 80**  
Colour rendering index values

IP65

Protection Rating



**UK CA** UK Conformity Assessed



**Warranty**  
2-year warranty extendable to 5 years

### EQUIPMENT INCLUDED

Adjustable steel bracket +/- 135°.

### FEATURES

Starting from the 100 W versions, multi-voltage power supply from 120 V to 277 V is equipped with a protection system up to 4 kV in common mode and 6 kV in differential mode.  
Steel cable gland.

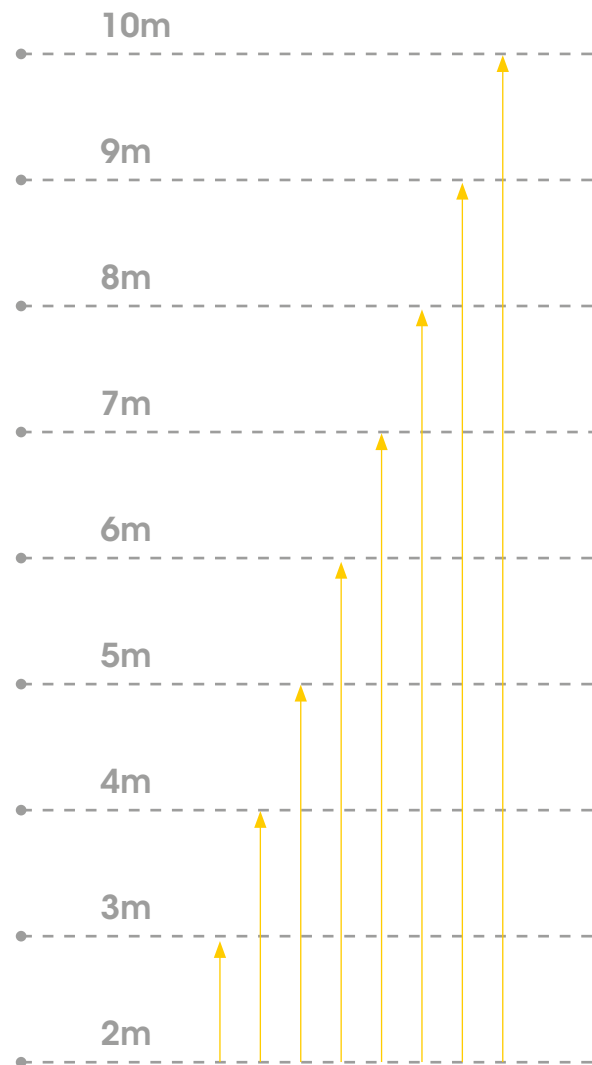
In the LEWDEN product range you will find luminaires characterised by standard durability, good efficiency and quality of light. They are the ideal choice for everyday installation needs and projects where, in addition to reliability, the focus is on cost-effectiveness.

The table below shows recommended installation heights.



INSTALLATION HEIGHT

	<b>BVHC9840SC</b> 25650 lm	<b>851500 - 851510</b> 24000 lm
	<b>BVHB9840SC</b> 20250 lm	
		<b>851400 - 851410</b> 18000 lm
	<b>BVHA9840SC</b> 13500 lm	<b>851300 - 851310</b> 12000 lm
<b>852150</b> 7000 lm		
		<b>851200 - 851210</b> 6000 lm
<b>852120</b> 5040 lm		
<b>852060</b> 2800 lm		
		<b>851100</b> 2400 lm





WATERPROOF		HIGH-BAY	FLOODLIGHT	Comparison
<b>852060</b>	2800 lm			2x18W T8
<b>852120</b>	5040 lm			2x36W T8
<b>852150</b>	7000 lm			2x58W T8
			<b>851100</b>	2400 lm 70W JM/SAP
			<b>851200 -851210</b>	6000 lm 100W JM/SAP
	<b>BVHA9840SC</b>	13500 lm	<b>851300 -851310</b>	12000 lm 250W JM/SAP
	<b>BVHB9840SC</b>	20250 lm	<b>851400 -851410</b>	18000 lm 400W JM
	<b>BVHC9840SC</b>	25650 lm	<b>851500 -851510</b>	24000 lm 400W JM/SAP

Comparison table between BRAVO codes and the other technologies.

