

# LOGYCO

Floodlights  
from 5150 lm to 9760 lm



LIGHTING

***Palazzoli***



## The series



Next-generation floodlights, featuring a compact and robust design.

The housing is made of self-extinguishing, thermally conductive technopolymer ECOTHERM, engineered to ensure high mechanical performance and maximum reliability even in demanding environments, making it perfectly suitable for outdoor use.

ECOTHERM is a sustainable solution, as it has a low environmental impact and is 100% recyclable. According to LCA (Life Cycle Assessment – ISO 14040 and 14044) analyses, it allows a reduction of the environmental footprint over the entire product life cycle of approximately 30% compared to equivalent conventional floodlights.

The LED module with High Power sources works in synergy with proprietary high-transparency optical PMMA lenses (>95%). LOGYCO uses white light LEDs with colour temperatures ranging from 2200 K to 6000 K, with luminous efficacy of up to 165 lm/W.

The LED driver provide high protection against overvoltage, ensuring resistance to differential mode (DM) and common mode (CM) surge impulses up to 10 kV.

The fixture's hermetic sealing is ensured by a 4 mm thick extra-clear flat tempered glass, impact-resistant and equipped with a non-removable gasket.

The luminaire is supplied with a 30 cm H07RN-F 2x1.5 mm<sup>2</sup> cable and an IP68 power quick connector.

The mounting bracket, with +/- 135° adjustment, is secured to the floodlight by an innovative metal compression locking system.

Upon request, the fixtures can be supplied with radio-wave remote control modules. A complete radio-based remote control system can also be provided, ensuring efficient and flexible management to meet any operational requirement.



## ADVANTAGES OF ECOTHERM



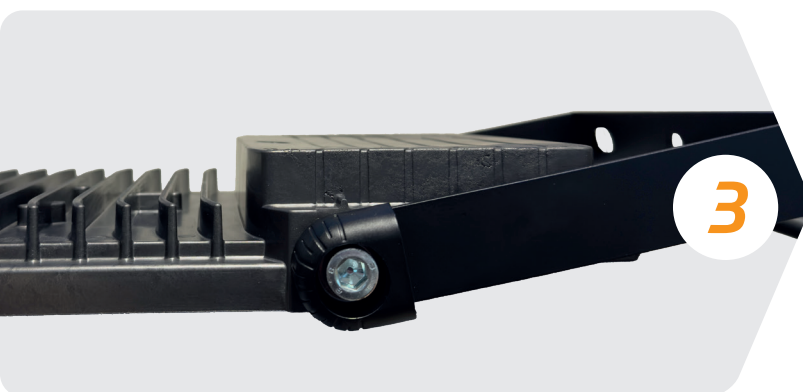
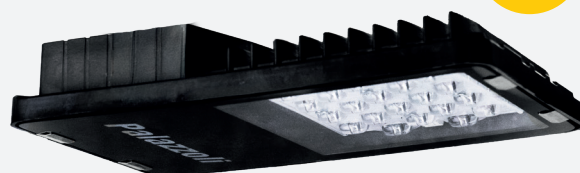
### SUSTAINABLE

ECOTHERM is a sustainable choice for lighting. LCA analyses (ISO 14040 and 14044) highlight an approximately 30% reduction in environmental footprint over the entire product life cycle compared to equivalent conventional floodlights.

### LIGHTWEIGHT

The weight of the fixture is reduced by up to 40% compared to die-cast aluminum products. This feature ensures easier, faster, and safer installation and maintenance operations.

2



### OXIDATION-RESISTANT

The ECOTHERM housing, without any surface coatings, is resistant to oxidation and all types of corrosion (saline, galvanic, and chemical). The internal electrical components are protected against eddy currents and common-mode overvoltages, ensuring high long-term reliability.

### SURGE-PROTECTED

The ECOTHERM housing ensures electrical insulation by design and complies with Class II standards. The design integrates thermal dissipation, protecting the LEDs and driver from electrostatic discharges and preserving their integrity.

4



# LOGYCO floodlight



**WARRANTY**  
UP TO 7 YEARS



## DIRECTIVES

2014/30/UE (EMC)  
2014/35/UE (LVD)  
2011/65/UE (RoHS)  
2012/19/UE (RAEE)  
2009/125/CE (ERP)  
Reg. UE 2019/2020 (EcoDesign)

## PRODUCT STANDARDS

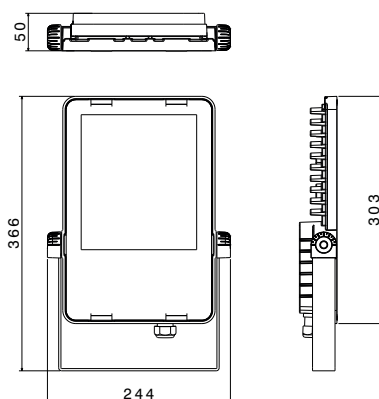
EN 55015  
EN 60598-1  
EN 60598-2-1  
EN 60598-2-5  
EN 60598-2-22  
EN 60598-2-24  
EN 61000-3-2  
EN 61000-3-3  
EN 61547  
EN 62311  
EN 62493  
EN 62471  
IEC TR 62778  
EN 63000

Body material	<b>Thermally conductive technopolymer ECOTHERM</b>
Colour	<b>Black</b>
Diffuser material	<b>Extra-clear tempered glass</b>
Protection rating	<b>IP66 as per IEC 60598-1</b>
Impact resistance	<b>IK08 as per IEC/EN 62262</b>
Corrosion class	<b>C5-H ISO 9223</b>
Mounting system	<b>U-bracket with -135°... +135° adjustment</b>
Ambient operating temperature	<b>-40 °C - +45 °C</b>
Ambient storage temperature	<b>-40 °C - +70 °C</b>
Actual efficacy of the device	<b>Up to 165 lm/W</b>
Colour temperature	<b>4.000 K</b>
Optics features	<b>Non-ageing UV-resistant PMMA lenses with efficiency &gt;90% and transparency &gt;95%</b>
Colour rendering index values	<b>CRI ≥ 70 as per EN 62717</b>
Colour consistency	<b>MacAdam 4-step</b>
Photobiological risk	<b>RG0 - Exempt Group (EN 62471)</b>
Residual flicker	<b>&lt; 1%</b>
Luminous flux maintenance	<b>L80 B10 @ 150,000h Tq=+25 °C</b>
Insulation class	<b>II</b>
Supply voltage	<b>220-240V 50/60 Hz</b>
Surge protection	<b>8 kV common mode and 10 kV differential mode as per EN 61000-4-5</b>
Power factor	<b>≥ 0,95</b>
Type of power supply	<b>H05RN-F 2x1 mm² cable length 20 cm with 2Px2,5 mm² connector</b>
Max. conductor cross-section	<b>2,5 mm²</b>
Entry cable diameter	<b>7 ÷ 13 mm</b>

Special versions can be made with a DALI power supply, with radio wave remote control and with colour temperatures from 2100 K (amber) to 6500 K.



# LOGYCO floodlight

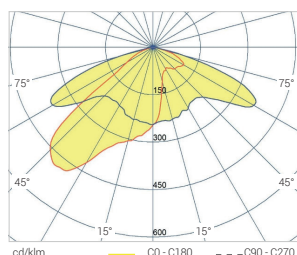


Flicker  
<1%

Classe  
II

IP66

IK08



## Roadway 65° wide beam optics

Included: wall-mounting bracket.

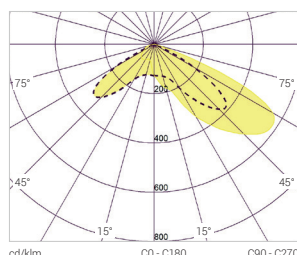
Power supply with 2Px2.5 mm<sup>2</sup> connector and 2x1 mm<sup>2</sup> H05RN-F cable, length 20 cm.

PMMA lenses.

The stated flux and power values may be subject to a +/- 7% tolerance.



LED No.	Power (W)	Nominal flux (lm) Tj=25°C	Output flux (lm) Tq=25°C	Diffuser	Efficiency (lm/W)	Version	Weight (Kg)	Code
20	35	6180	5150	Glass	147	On-off	1,8	<b>806328</b>
20	46	8040	6700	Glass	147	On-off	1,8	<b>806368</b>
20	61	10395	8662	Glass	142	On-off	1,8	<b>806398</b>



## Large areas 60° extra wide beam optics

Included: wall-mounting bracket.

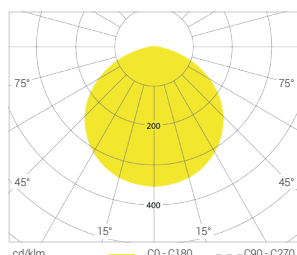
Power supply with 2Px2.5 mm<sup>2</sup> connector and 2x1 mm<sup>2</sup> H05RN-F cable, length 20 cm.

PMMA lenses.

The stated flux and power values may be subject to a +/- 7% tolerance.



LED No.	Power (W)	Nominal flux (lm) Tj=25°C	Output flux (lm) Tq=25°C	Diffuser	Efficiency (lm/W)	Version	Weight (Kg)	Code
20	35	6180	5150	Glass	147	On-off	1,8	<b>806327</b>
20	46	8040	6700	Glass	147	On-off	1,8	<b>806367</b>
20	61	10395	8662	Glass	142	On-off	1,8	<b>806397</b>



## Symmetrical 120° extra wide beam optics

Included: wall-mounting bracket.

Power supply with 2Px2.5 mm<sup>2</sup> connector and 2x1 mm<sup>2</sup> H05RN-F cable, length 20 cm.

The stated flux and power values may be subject to a +/- 7% tolerance.



LED No.	Power (W)	Nominal flux (lm) Tj=25°C	Output flux (lm) Tq=25°C	Diffuser	Efficiency (lm/W)	Version	Weight (Kg)	Code
20	35	6180	5775	Glass	165	On-off	1,8	<b>806329</b>
20	46	8040	7544	Glass	164	On-off	1,8	<b>806369</b>
20	61	10395	9760	Glass	160	On-off	1,8	<b>806399</b>

## Accessories LOGYCO



LOGYCO equipped with **bracket**

### HEAD POLE MOUNTING



Universal attachment for head pole installation for Ø 60 mm and Ø 76 mm nominal pole

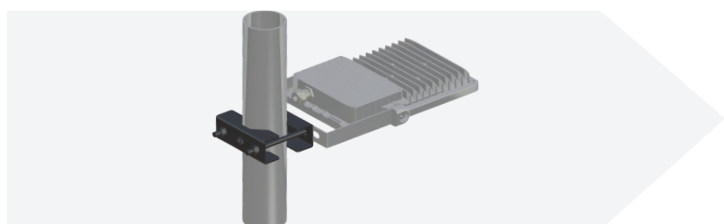


Code

**811908**

Material:  
painted  
galvanized steel

### POLE MOUNTING



Kit consisting of collar and plate for Ø 60 mm to Ø 80 mm pole mounting



Code

**811912**

Material:  
painted  
galvanized steel

### ARM MOUNTING



Support for arm installation 750 mm projection



Code

**811914**

Material:  
painted  
galvanized steel

## Complete the INDUSTRY offer



### ALUMINIUM LIGHTING FLOODLIGHTS



#### **TIGUA**

from 6480 lm to 24252 lm



#### **XTIGUA**

from 23300 lm to 126412 lm



#### **DARWIN**

from 60000 lm to 194400 lm



#### **FLIGHT**

from 5250 lm to 10370 lm



#### **META**

from 9193 lm to 18387 lm

### AISI 316 L STAINLESS STEEL LIGHTING FLOODLIGHTS



#### **YUMA**

da 9620 lm a 25480 lm

## Complete the ATEX offer



### ALUMINIUM LIGHTING FLOODLIGHTS FOR ZONE 1,2,21,22



#### **TIGUA-EX** zone 1, 2, 21, 22

from 5808 lm to 16560 lm



#### **XTIGUA-EX** zone 1, 2, 21, 22

from 17365 lm to 33120 lm

### ALUMINIUM LIGHTING FLOODLIGHTS FOR ZONE 2,21,22



#### **TIGUA-EX** zone 2, 21, 22

from 6312 lm to 18000 lm



#### **XTIGUA-EX** zone 2, 21, 22

from 19630 lm to 36864 lm

Online  
catalogue





Always a step ahead  
creating a lasting impact

Customer focused operations

Smart engineering

Top Manufacture

Service excellence



Palazzoli S.p.A.  
Via F. Palazzoli, 31 - 25128 Brescia - Italy  
Tel. +39 030 2015.1  
[palazzoli.com](http://palazzoli.com)



***Palazzoli***